



Q3 SUMMER 2020
JUNE 28 - OCTOBER 24
OFFER VALID WHILE SUPPLIES LAST



DROP PREVENTION

A Critical Challenge - Solved

Page 2-3



MOBILE FABRICATION KIT FOR PLEXIGLASS ENCLOSURES

Page 7

At Snap-on® Industrial Brands, we know that safety AND productivity are critical to your company's efficiency and profitability. We also recognize that lost productivity can occur for a variety of reasons. That's why we designed the Tools@Height™ system to provide effective, reliable drop prevention that keeps your workers safe...and working.

Consider the benefits of Tools@Height compared with "in-house" drop prevention systems:



5

LEAVE IT TO THE EXPERTS -

Snap-on® Industrial Brands will work with you to determine your drop prevention needs and provide a complete system to help your workers work safely and efficiently.



4

RETAIN CONTROL -

Our modular approach allows you to configure tools and holsters to your needs.



SAVE TIME AND MONEY -

Engineered attachment points don't interfere with the functionality of the tools.



1

2

BEAT THE STATISTICS -

About 70% of drops happen during the exchange of the lanyard from one tool to another. The Snap-on® Industrial Brands Tools@Height System™ tethers each tool with its own lanyard, minimizing exchanges and reducing the likelihood of drops.

3



MINIMIZE RISK -

Independent tethering allows a tool to be removed and returned to its holster with one hand so the user can maintain the critical "three points of contact" when working at height.





27 PIECE TOOLS@HEIGHT STARTER SET

- All tools are designed to be used with our tethering and retention systems which maintain or enhance the tools' functionality when used at height or near critical assemblies
- Includes tools and assortment of pouches and lanyards designed for use with a suitable belt

WSC-27-TH \$2,679.50 **\$1,148.36**



45 PIECE TOOLS@HEIGHT STARTER PLUS SET

- The ideal way to start a drop prevention program
- Use where dropped tools can harm personnel, damage components, or cause down time
- Excellent assortment of basic hand tools for most maintenance applications
- Furnished in Safe Bucket for easy portability

WSC-45-TH \$3,335.76 **\$1,429.61**



72 PIECE TOOLS@HEIGHT BASIC MAINTENANCE SERVICE SET

- Furnished in Safe Bucket for easy portability. Safety right out of the box
- The Tools@Height Basic Maintenance set provides a good start to a Tools@Height tool program. All tools are designed to be used with our tethering and retention systems which maintain or enhance the tools' functionality when used at height or near critical assemblies
- Many applications - any industry where a dropped tool could harm personnel, damage machinery or cost production time
 - High level uses - drilling derricks, wind turbines, cranes, buildings, bridges, masts, power lines, hangars, scaffold builders
 - Low level uses - stop tools dropping onto flight hardware, into engines, machinery, food production lines, vats, mine shafts, even under water uses

WSC-72TH \$7,141.50 **\$3,060.64**



Electrician's Crew Kit

- Designed to maintain productivity while improving safety for electricians working at height
- Includes 16 sockets, 13 open end/box combination wrenches, 5 C-clamps, 2 pipe wrenches, 2 files and more
- Features engineered attachment points, tethers, and field-tested lanyards

KWTELECWKT \$3,695.35 **\$1,583.73**



SAFETY

WILLIAMS®

**CUT SAFELY WITHOUT
SACRIFICING SPEED**



DON'T BE LUCKY. BE SAFE.

**LEARN MORE ABOUT HAND TOOL
SAFETY FROM THE EXPERTS**

- LEARN ABOUT THE DANGERS INVOLVING MISUSED, MODIFIED, AND POORLY MAINTAINED TOOLS
- BROADEN YOUR AWARENESS OF HAND TOOL CATEGORIES
- FINE-TUNE SAFETY KNOWLEDGE WITH PRESENTATION CONTENT TAILORED TO YOUR INDUSTRY



**ASK YOUR SNAP-ON INDUSTRIAL BRANDS
DISTRIBUTOR FOR DETAILS**



Autoload Quick-Blade Utility Knife

- Includes (5) Heavy-Duty .025" Thick 2-Notch Blades
- Blade is easily removed or reversed from the front with push-button ease
- New blade is automatically loaded from 5-blade magazine
- Spring-loaded cover makes reloading quick and tool-free

40052 ~~\$28.04~~ **\$12.01**



Safety Utility Knives & Blades

- Guarded spring-back blade
- Variable blade depth control for top cuts and tray cuts
- Integrated film and shrink cutter
- Safety point blade standard
- 1 step blade change
- Integrated tape splitter

Ambidextrous Safety Cutter with Holster and Lanyard

40080 ~~\$32.81~~ **\$14.06**

5-Pack Replacement Safety Point Blades for 40080

40086 ~~\$44.85~~ **\$19.23**

3-Pack Film Cutter Unit for 40080

40088 ~~\$11.79~~ **\$5.06**

Disposable Safety Cutter

- Lightweight, ergonomic, ambidextrous disposable safety cutter
- Retracting safety hooded guard prevents cuts
- NSF certified for food areas
- Safety point blade included standard
- Integrated tape splitter
- Stainless steel blade for hygiene
- 3-button mechanism for top and side cuts

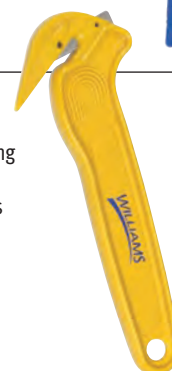
40082 ~~\$7.02~~ **\$3.01**



Disposable Film Cutter

- Durable plastic construction and a long-lasting super sharp blade
- Retracting safety hooded guard prevents cuts
- Suitable for use in food areas
- Integrated tape splitter
- Stainless steel blade for hygiene
- Cuts tape, strapping, shrink wrap and film

40084 ~~\$7.74~~ **\$3.31**



HI-VISIBILITY AND CLAMPING

WILLIAMS®

HI-VISIBILITY THAT'S
EASY TO CLEAN



High Visibility Combination

Wrench Sets

FEATURES WILLIAMS® EXCLUSIVE SUPERTORQUE® BOX END AND SUPERCOMBO® OPEN END DESIGNS (SEE PAGE 6)

- Special red or yellow finish on all wrenches in the set help identification and visibility
- Meets or exceeds aerospace specification AS 954 for 12 point fasteners (as defined by AS 870) to provide accurate torque/tension relationship for precision application

High Visibility Red Finish

AVAILABLE IN SAE W/ 12 POINT BOX END

7-Piece SAE Set WS-1170RSC \$198.88 ~~\$198.88~~ \$85.23

- Includes sizes 3/8" to 3/4"

11-Piece SAE Set WS-1171RSC \$397.04 ~~\$397.04~~ \$170.16

- Includes sizes 3/8" to 1"

14-Piece SAE Set WS-1172RSC \$653.64 ~~\$653.64~~ \$280.13

- Includes sizes 3/8" to 1-1/4"

High Visibility Yellow Finish

AVAILABLE IN SAE W/ 12 POINT BOX END

7-Piece SAE Set WS-1170YSC \$198.88 ~~\$198.88~~ \$85.23

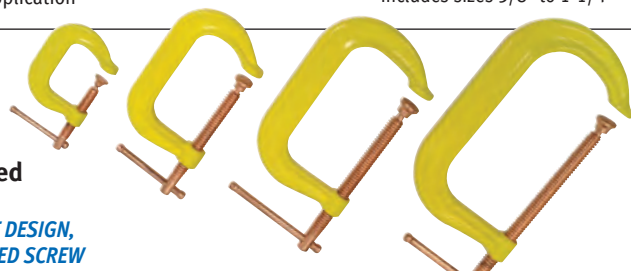
- Includes sizes 3/8" to 3/4"

11-Piece SAE Set WS-1171YSC \$397.04 ~~\$397.04~~ \$170.16

- Includes sizes 3/8" to 1"

14-Piece SAE Set WS-1172YSC \$653.64 ~~\$653.64~~ \$280.13

- Includes sizes 3/8" to 1-1/4"



Drop Forged C-Clamps

DEEP THROAT DESIGN,
COPPER PLATED SCREW

Stock No.	Capacity (Inches)	Throat Depth (Inches)	Screw Diameter (Inches)	Working Load (lbs)	Max. Hand Load (lbs)	Frame Proof Load (lbs)	Price / Sale Price
20002	2	2-1/4	9/16	2000	2600	3500	\$37.44 \$16.04
20003	3	2-7/16	9/16	2400	2880	3500	\$42.22 \$18.10
20004	4	3-1/4	11/16	2800	4480	6500	\$47.72 \$20.46
20006	6	4-1/16	3/4	3400	4700	6900	\$65.86 \$28.23
20008	8	5	3/4	4000	4930	6900	\$87.05 \$37.31
20010	10	6	7/8	5000	5500	8000	\$110.31 \$47.27
20012	12	6-1/2	7/8	6000	7000	9500	\$168.13 \$72.06

- Copper plated screw resists weld splatter
- Drop-forged and heat treated for maximum strength and greater rigidity
- I-Beam design for extra strength
- Powder coated frame resists rust
- "Safety Yellow" color makes clamps easy to locate in dark work areas

EASY TO FIND.
NEVER LEFT BEHIND.



JHW-24

Deadblow Hammers

ERGONOMICALLY DESIGNED HANDLES

Stock No.	Weight (ozs.)	Overall Length (Inches)	Head Length (Inches)	Face Diameter (Inches)	Price / Sale Price
JHW-16	16	12	3-1/4	1-9/16	\$53.77 \$23.04
JHW-24	24	12-3/4	3-3/4	1-3/4	\$61.99 \$26.57
JHW-32	32	13-1/2	4-1/4	2	\$72.09 \$30.90
JHW-48	48	15	4-3/4	2-1/4	\$95.68 \$41.00
JHW-56	56	15-3/4	5-7/16	2-3/4	\$129.31 \$55.41

- Hard urethane construction resists cut damage to hammer head
- Head provides a non-marring contact surface that will not damage equipment
- Deadblow feature minimizes hammer bounce back, reducing fatigue and improving productivity.

Drop Forged C-Clamps

DEEP THROAT DESIGN,
COPPER PLATED SCREW



Stock No.	Capacity (Inches)	Throat Depth (Inches)	Screw Diameter (Inches)	Min. Test Load (lbs)	Price / Sale Price
CC-402C	2	2-11/32	1/2	3500	\$69.00 \$29.57
CC-403C	3	2-3/4	1/2	3500	\$86.83 \$37.21
CC-404C	4	3-3/16	3/4	6500	\$111.55 \$47.81
CC-406C	6	4-1/8	3/4	6900	\$142.03 \$60.87
CC-408C	8	5-3/16	3/4	6900	\$209.88 \$89.94
CC-410C	10	6	3/4	8000	\$281.18 \$120.50
CC-412C	12	6-1/2	7/8	9500	\$351.33 \$150.57

- Copper plated screw resists weld splatter
- Drop-forged and heat treated for maximum strength and greater rigidity
- I-Beam design for extra strength
- Highly resistant to "springing"

Drop Forged C-Clamps

DEEP THROAT DESIGN,
STANDARD SCREW



Stock No.	Capacity (Inches)	Throat Depth (Inches)	Screw Diameter (Inches)	Min. Test Load (lbs)	Price / Sale Price
CC-402S	2	2-11/32	1/2	3500	\$69.00 \$29.57
CC-403S	3	2-3/4	1/2	3500	\$86.83 \$37.21
CC-404S	4	3-3/16	3/4	6500	\$109.83 \$47.07
CC-406S	6	4-1/8	3/4	6900	\$140.30 \$60.13
CC-408S	8	5-3/16	3/4	6900	\$207.00 \$88.71
CC-410S	10	6	3/4	8000	\$278.30 \$119.27
CC-412S	12	6-1/2	7/8	9500	\$346.15 \$148.36

- Black threaded screw with T-handle
- Drop-forged and heat treated for maximum strength and greater rigidity
- I-Beam design for extra strength
- Highly resistant to "springing"

HAND TOOLS



LAPLANDER - FOR THOSE WHO MAKE THEIR OWN TRAIL

Laplander General Purpose Folding Saw

- Specially designed for wildlife enthusiasts, hunters and campers
- Cuts both green and dry wood, plastic, bone etc
- Spare blades available

396-LAP \$54.90 **\$23.53**



Laplander and Multi-Purpose Knife

- 2 piece set includes Bahco 396-LAP general purpose folding saw and 2444 multi-purpose knife with holster
- 8" saw blade length with 7 teeth per inch
- Knife has two component handle for comfortable grip and polished stainless steel blade

LAP-KNIFE \$74.02 **\$31.73**



**JOHAN'S INGENUITY GAVE US ADJUSTABILITY!
A MUST-HAVE FOR EVERY TOOL BELT.**

Finish	Stock No.	Length (Inches)	Max. jaw Opening (Inches)	Head Thickness (Inches)	Jaw Tip Thickness (Inches)	Price	Sale Price
CHROME	8069 RC US	4	1/2	3/8	1/8	\$39.02	\$16.73
	8070 RC US	6	3/4	7/16	3/16	\$40.86	\$17.51
	8071 RC US	8	1-1/16	1/2	1/4	\$43.27	\$18.54
	8072 RC US	10	1-1/8	5/8	5/16	\$53.00	\$22.71
	8073 RC US	12	1-5/16	11/16	7/16	\$76.21	\$32.66
	8074 RC US	15	1-11/16	13/16	9/16	\$135.30	\$57.99
	8075 RC US	18	2-1/16	7/8	11/16	\$229.61	\$98.40
BLACK PHOSPHATE	8069 R US	4	1/2	3/8	1/8	\$33.21	\$14.23
	8070 R US	6	3/4	7/16	3/16	\$34.78	\$14.90
	8071 R US	8	1-1/16	1/2	1/4	\$36.84	\$15.79
	8072 R US	10	1-1/8	5/8	5/16	\$45.06	\$19.31
	8073 R US	12	1-5/16	11/16	7/16	\$66.98	\$28.70
	8074 R US	15	1-11/16	13/16	9/16	\$98.90	\$42.39
	8075 R US	18	2-1/16	7/8	11/16	\$137.92	\$59.11
	86	24	2-7/16	1-1/16	1-1/16	\$383.69	\$164.44
	87	30	3-5/16	1-3/16	1-3/16	\$938.24	\$402.10



IN 1892 JOHAN PETTER JOHANSSON INVENTED THE ADJUSTABLE SPANNER, WHICH FORMED THE BASIS FOR THE ADJUSTABLE WRENCH – A BAHCO ORIGINAL.

Adjustable Wrenches

- Slim head with tapered jaws combine easy accessibility with extra turning strength
- Measurement scale on head conveniently shows fastener size (except for 24" and 30" wrenches)
- Precision hardened and anti-corrosion treated
- Jaw does not fall out even at maximum opening of the wrench
- High performance alloy steel forged in single piece
- Parallel jaws placed at a 15° angle provide a firm grip and best reach
- Wide handle for comfort in use
- Accurate jaw movement
- Ultimate strength through precision hardening and high-performance alloy steel

3 Piece Chrome Adjustable Wrench Set, in Pouch

- Includes 8070 RC US - 6", 8071 RC US - 8" and 8072 RC US - 10"

80RCUS3 \$146.90 **\$62.96**

3 Piece Black Phosphate Adjustable Wrench Set, in Pouch

- Includes 8070 R US - 6", 8071 R US - 8" and 8072 R US - 10"

80RUS3 \$129.95 **\$55.70**

Follow the fish!



PLEXIGLASS FABRICATION KIT



MOBILE FABRICATION KIT FOR PLEXIGLASS ENCLOSURES



92-Piece Plexiglass Fabrication Kit with Tool Bag

• Includes one of every item on this page **AND** 4750FB2-19A Tool Bag **BAHPXIFABKIT \$1,517.54 \$650.37**

91-Piece Plexiglass Fabrication Kit - Tools Only

• Includes one of every item on this page **EXCEPT** 4750FB2-19A Tool Bag
BAHPXIFABSET \$1,411.74 \$605.03

19" Closed Tool Bag with Hard Bottom

• Multiple interior and exterior pockets
4750FB2-19A \$100.65 \$43.14



Superior™ Hole Saws

• Perfect for wood (including MDF), brick, light-weight concrete, plasterboard and hard plastics

13-Piece

• Includes 3/4", 25/32", 1", 1-1/4", 1-5/8", 2", 2-7/8", 3", 3-1/4", 3-3/8" arbors, pilot drill
3833-SET-201 \$468.33 \$200.71



Carbide-Tipped Hole Saw Set

• Cut through non-metallic surfaces from hardwood to bricks

7-Piece Set

• Includes 7/8", 1", 1-1/8", 1-1/4", 1-1/2", arbor and adapter

863307 \$128.47 \$55.06

PrizeCut Toolbox Handsaw

• 14" blade, 15/16 TPI
• Strong, hard wearing universal toothings is suitable for rip and cross cutting in all types of wood
300-14-F15/16-HP \$29.85 \$12.80



Contour Handsaw

• 12" fine tooth blade, 9 TPI
• Ideal for cutting all kinds of wood and plastic
PC-12-COM \$36.45 \$15.63



Rotary Burrs

• Extra Coarse Toothings for soft materials when good stock removal is required.
Counteracts chip build-up between teeth

1/2" Diameter 1" Long Head Medium Tooth

HSSG-A1225M-S \$124.28 \$53.26



3/8" Diameter 3/4" Long Head Medium Tooth

HSSG-C1020M \$121.82 \$52.21



Bi-Metal Jigsaw Blades (5-pack)

• Ideal for cutting wood, plastic and other soft materials
• T-shank design fits most jigsaw machines



Stock No.	Length (Inches)	Width (Inches)	Teeth Per Inch	Tooth Set	Qty. Per Pack	Price	Sale Price
91-023-5P	4	19/64	8	Side Set	5	\$11.77	\$5.04
91-027-5P	3	532	12	Wavy Set	5	\$13.46	\$5.77
91-223-5P	4	9/32	10	Taper Ground	5	\$15.68	\$6.71
91-226-5P	4	9/32	10	Taper Ground	5	\$20.87	\$8.94

1-106-08-1-2



1-230-10-3-2



1-210-08-2-2



Engineering Files with Bi-Molded ERGO® Handle



• Best suited for soft steel, stainless-steel, light metal alloys and hard plastics

Stock No.	Length (In.)	Teeth Per Inch	Type of File	Type of Cut	Price	Sale Price
1-106-08-1-2	8	25	Hand	Bastard	\$21.69	\$9.30
1-106-10-1-2	10	23	Hand	Bastard	\$29.07	\$12.46
1-230-10-3-2	10	41	Round	Smooth	\$18.29	\$7.84
1-210-08-2-2	8	36	Half-Round	Second	\$22.53	\$9.66

File cleaner

• Use the brush to clear clogged file teeth.
Doing so regularly will improve the stock removal efficiency of the file, and extend its useful life
9-467-00-0-0 \$52.89 \$22.67



9" Bi-Metal Heavy Duty Metal Cutting Blades (10-pack)

• .042" thick, 1" wide, 10 TPI blade
• Designed for extreme metal cutting

3840-228-10-HST-10P \$47.24 \$20.24

Stock No.	Teeth Per Inch
3940-100-14-SC-5P	14
3940-100-18-SC-5P	18
3940-100-24-SC-5P	24



4" Scroll Bi-Metal Blades (5-pack)

• .035" thick blade for cutting metal, plastic, laminates and wood with nails

\$14.56 \$6.24

Stock No.	Teeth Per Inch	Material Thickness
3845-18-10P	18	Over .20"
3845-24-10P	24	0.8" - .20"
3845-32-10P	32	.0" - 0.8"



3.5" Bi-Metal Saw Blades (10-pack)

• For pneumatic or electric reciprocating shop saws

\$37.44 \$16.03



WRENCHES SCREWDRIVERS

WILLIAMS®



Standard Ratcheting Combination Wrench Sets

7-Piece SAE Set

WS-1170RS

\$422.05 **\$180.89**

• Includes sizes 3/8" to 3/4"

10-Piece SAE Set

WS-1180RS

\$588.19 **\$252.09**

• Includes sizes 1/4" to 3/4"

10-Piece Metric Set

MWS-10RS

\$611.52 **\$262.09**

• Includes sizes 10 to 19 mm



Reversible Ratcheting Combination Wrench Sets

• Wrenches feature a low profile, easy action, reverse lever and longer wrench handle for increased leverage

7-Piece SAE Set WS-1170RCU

\$500.83 **\$214.64**

• Includes sizes 3/8" to 3/4"

10-Piece Metric Set MWS-10RCU

\$698.04 **\$299.16**

• Includes sizes 10 to 19 mm



Stubby Ratcheting Combination Wrench Sets

• Extra short handle is perfect for access where clearance is limited

7-Piece SAE Set WS-1170RSS

\$406.58 **\$174.24**

• Includes sizes 3/8" to 3/4"

10-Piece Metric Set MWS-10RSS

\$581.62 **\$249.27**

• Includes sizes 10 to 19 mm



12 Piece Combination Screwdriver Set

• Contains 6 slotted, 4 Phillips® and 2 TORX® screwdrivers

24008A \$172.08 **\$73.74**



8 Piece Combination Screwdriver Set (Not pictured)

• Contains 5 slotted and 3 Phillips® screwdrivers

24006A \$119.76 **\$51.33**



Slotted Screwdrivers

Stock No.	Overall Length (Inches)	Blade length (Inches)	Tip Width (Inches)	Price / Sale Price
24203A	3-7/8	1-1/2	3/16	\$9.94 \$4.26
24205A	7-3/4	4	3/16	\$10.46 \$4.49
24217A	3-7/8	1-1/2	1/4	\$10.93 \$4.69
24219A	8-1/4	4	1/4	\$14.19 \$6.09
24229A	10-3/16	6	1/4	\$15.35 \$6.59
24237A	10-9/16	6	5/16	\$18.54 \$7.94
24241A	12-9/16	8	3/8	\$19.94 \$8.54

- 3 component handles provides a maximum comfort grip
- Size is shown on blade and tip style is shown on handle for easy identification
- Chrome blades prevent corrosion and can be easily cleaned
- Sand blasted tip for greater screw-tip adherence and high resistance against corrosion



Phillips® Screwdrivers

Stock No.	Overall Length (Inches)	Blade length (Inches)	Point Size	Price / Sale Price
24249A	5-11/16	3	1	\$13.39 \$5.74
24251A	3-7/8	1-1/2	2	\$11.56 \$4.96
24253A	8-1/4	4	2	\$14.12 \$6.06
24259A	10-9/16	6	3	\$20.58 \$8.81



TORX® Screwdrivers

Stock No.	Overall Length (Inches)	Blade length (Inches)	TORX® Size	Price / Sale Price
24265A	7-3/4	4	T15	\$12.15 \$5.21
24269A	8-1/4	4	T25	\$13.02 \$5.59

NOT YOUR DADDY'S SCREWDRIVER

Sand blasted tip for greater screw-tip adherence

Laser marking on the blade (code & size & COO)

Flat face to prevent rolling

High performance, chrome plated alloy steel blade for high corrosion resistance

Indelible tip symbol by overflow for easy identification of the tip

Double-shaped handle for use with both hands. Heavy duty design for maximum torque power.

Hanging hole in the handle also permits T-bar insertion for transmission of additional force

Logo by tampo printing

3 component handle for maximum user comfort and force transmission



TORQUE SOLUTIONS

CDI TORQUE
PRODUCTS®

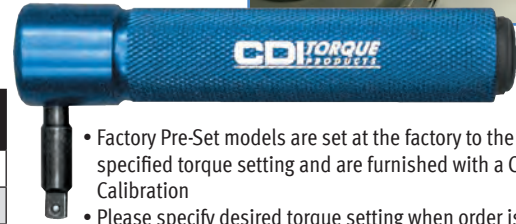


TORKY - Single Setting Wrenches

TORKY IS DESIGNED FOR PRODUCTION TORQUE APPLICATIONS THAT REQUIRE HIGHER VALUES THAN A TORQUE SCREWDRIVER CAN DELIVER



Stock No.	Factory Pre-Set	Drive	Torque Range	Width X Length (in)	Weight (Oz)	Price / Sale Price
1501TPA-1	NO	1/4" Female Hex	20-170 in.lbs.	1 x 5.25	8.3	\$252.16 \$108.07
1501TPA-1-SET	YES	1/4" Female Hex	20-170 in.lbs.	1 x 5.25	8.3	\$371.81 \$159.34
1501TP-1	NO	1/4" Male Square	20-170 in.lbs.	1 x 5.25	8.3	\$273.63 \$117.27
1501TP-1-SET	YES	1/4" Male Square	20-170 in.lbs.	1 x 5.25	8.3	\$412.95 \$176.99
1502TP-1	NO	3/8" Male Square	20-170 in.lbs.	1 x 5.25	8.3	\$282.78 \$121.19
1502TP-1-SET	YES	3/8" Male Square	20-170 in.lbs.	1 x 5.25	8.3	\$420.54 \$180.23



- Factory Pre-Set models are set at the factory to the customer's specified torque setting and are furnished with a Certificate of Calibration
- Please specify desired torque setting when order is placed
- Simple, easy to use design
- Ruggedly built for years of reliable service
- Operates bi-directionally
- Accuracy: $\pm 6\%$ of indicated value, CW, from 20% to 100% of full scale

Torque Screwdrivers - Single Setting

PARTICULARLY SUITED FOR HIGH-VOLUME USE IN ASSEMBLY OPERATIONS



Stock No.	Factory Pre-Set	Torque Range	Width X Length (in)	Weight (Oz)	Price / Sale Price
21SP	NO	6-32 in.ozs.	1.1 x 4.5	5.3	\$267.89 \$114.81
21SP-SET	YES	6-32 in.ozs.	1.1 x 4.5	5.3	\$406.92 \$174.40
61SP	NO	10-100 in.ozs.	1.1 x 5.6	7.0	\$281.89 \$120.81
61SP-SET	YES	10-100 in.ozs.	1.1 x 5.6	7.0	\$421.62 \$180.70
151SP	NO	1.5-15 in.lbs.	1.1 x 5.6	7.0	\$281.89 \$120.81
151SP-SET	YES	1.5-15 in.lbs.	1.1 x 5.6	7.0	\$421.62 \$180.70
401SP	NO	4-40 in.lbs.	1.2 x 6.3	9.6	\$327.50 \$140.36
401SP-SET	YES	4-40 in.lbs.	1.2 x 6.3	9.6	\$454.70 \$194.87



- Factory Pre-Set models are set at the factory to the customer's specified torque setting and are furnished with a Certificate of Calibration
- Please specify desired torque setting when order is placed
- Trilobular comfort grip
- Universal 1/4" hex bit holder with strong rare earth magnet
- Cam-over torque limiting clutch
- Rugged, light weight aluminum body
- Automatic lock in CCW direction
- Accuracy: $\pm 6\%$ of indicated value, CW, from 20% to 100% of full scale
- Meets or exceeds ASME B107.300 - 2010

Torque Screwdrivers - Micro-Adjustable

SUITED FOR THE ELECTRONICS INDUSTRY AND FOR INSTRUMENT ASSEMBLY WORK. POSITIVE LOCKING KNOB MAKES ACCIDENTAL SETTING CHANGES IMPOSSIBLE.

Stock No.	Torque Range	Increments	Width X Length (in)	Weight (Oz)	Price / Sale Price
61SM	20-100 in.ozs.	1 in.oz.	1.1 x 5.5	6.8	\$375.03 \$160.73
151SM	3-15 in.lbs.	.2 in.lbs.	1.1 x 6.25	8.0	\$384.17 \$164.64
401SM	5-40 in.lbs.	.5 in.lbs.	1.2 x 6.75	10.8	\$393.35 \$168.59
61NSM	10-80 cNm	1 cNm	1.1 x 5.5	6.8	\$358.91 \$153.81
151NSM	40-200 cNm	2 cNm	1.1 x 6.25	8.0	\$367.63 \$157.56
401NSM	50-450 cNm	5 cNm	1.2 x 6.75	10.8	\$393.35 \$168.59



- Positive locking pull down adjustment knob
- Please specify desired torque setting when order is placed
- Trilobular comfort grip
- Universal 1/4" hex bit holder with strong rare earth magnet
- Cam-over torque limiting clutch
- Slip resistant finish
- Easy-to-read window scale
- Light weight
- Automatic lock in CCW direction for removing screws
- Accuracy: $\pm 6\%$ of indicated value, CW, from 20% to 100% of full scale
- Individually serialized with matching certificate of calibration traceable to N.I.S.T.
- Meets or exceeds ASME B107.300 - 2010

Automatic lock in counter-clockwise direction makes screw removal a snap

Certified to the following industry specifications: ASME B107.300 - 2010 and ISO 6789

Comfortable, slip resistant finish

THE MICRO WITH MASSIVE VERSATILITY

Industry standard 1/4" hex receiver allows use of all standard driver bits (Phillips, Torx, etc.)

Cam-over torque limiting clutch for repeatability and accuracy

Lightweight yet rugged construction, built to last

Permanently lubricated internal mechanism, never needs oil

Easy-to-read window scale and adjustment knob for precise settings



HYDRAULIC SOLUTIONS

WILLIAMS®



Flat Body Cylinders

- Made of high quality steel
- Extremely low collapsed height for applications with minimal clearance at the lift point
- Great for areas of low clearance
- Maximum working pressure 10,000 psi / 700 bar
- In-line spring return vs "hook" style
- Chrome plated piston vs machined piston



• **ALL WILLIAMS® CYLINDERS AND PUMPS UNDERGO 100 % FUNCTIONAL QUALITY CONTROL TESTING**

• **WILLIAMS® PUMP RESERVOIRS ARE METAL - NOT PLASTIC LIKE MOST COMPETITORS**

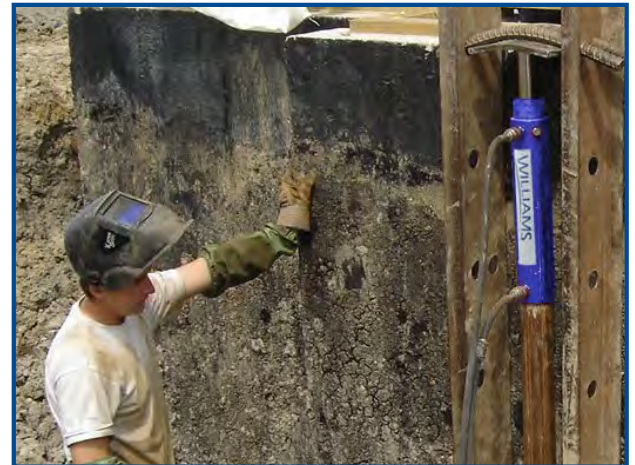
FLAT BODY CYLINDER SPECIFICATIONS

Stock No.	Hole Pitch (in)	Hole Dia. (in)	Cylinder Capacity (tons)	Stroke (in)	Collapsed Height (in)	Extended Height (in)	Outside Dim. (in)	Cylinder Bore Dia. (in)	Plunger Dia. (in)	Base to Port (in)	Plunger to Base (in)	Plunger to Mtg. Hole (in)	Price / Sale Price
6CF05T03	1.12	0.2	5	0.24	1.26	1.5	2.4 x 1.6	1.18	0.98	0.69	0.80	0.87	\$406.52 \$174.23
6CF10T05	1.44	0.28	10	0.43	1.69	2.12	3.3 x 2.2	1.73	1.50	0.77	1.12	1.32	\$581.28 \$249.11
6CF20T05	1.94	0.4	20	0.43	2.01	2.44	4.0 x 3.0	2.36	2.00	0.75	1.54	1.56	\$972.52 \$416.80
6CF30T05	2.06	0.4	30	0.51	2.31	2.82	4.6 x 3.8	2.87	2.50	0.79	1.88	1.75	\$1,126.47 \$482.77
6CF50T05	2.62	0.43	50	.63	2.64	3.27	4.5 x 4.5	3.54	2.76	0.79	2.25	2.13	\$1,815.96 \$778.27

• **SUPERIOR QUALITY HYDRAULICS PROVIDE MORE RELIABILITY AND INCREASED SAFETY**

Double Acting Cylinders

- Rod wiper seals out dirt and contamination
- High strength steel construction from gun drilled solid bar
- High flow 3/8" NPTF couplers
- One piece high grade alloy bearing for side load protection and long life
- Ideal for pushing and pulling
- Maximum working pressure: 10,000 psi / 700 bar
- Chrome plated piston vs machined piston



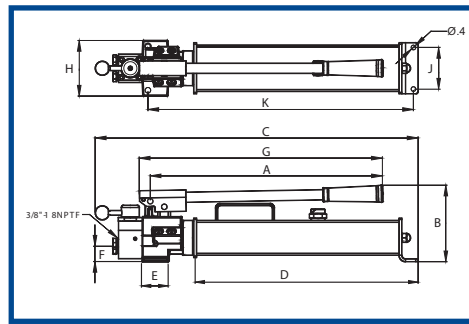
DOUBLE ACTING CYLINDER SPECIFICATIONS

Stock No.	Cylinder Capacity	Stroke	Maximum Cylinder Capacity		Cylinder Effective Area		Oil Capacity		Collapsed Height (in)	Extended Height (in)	Cylinder Bore Dia. (in)	Outside Dia. (in)	Price / Sale Price
	(tons)	(in)	Push (ton)	Pull (ton)	Push (in ²)	Pull (in ²)	Push (in ³)	Pull (in ³)					
6CD10T10	10	10.04	11.4	3.8	2.23	0.74	22.41	7.47	16.14	26.18	1.69	2.87	\$1,656.41 \$709.89
6CD10T12		11.97					26.71	8.90	18.03	30.00			\$2,067.32 \$886.00
6CD30T08	30	8.15	32.9	16.2	6.49	3.19	52.93	26.02	15.31	23.46	2.87	3.98	\$2,487.19 \$1,065.94
6CD30T15		14.49					94.09	46.26	21.65	36.14			\$2,909.74 \$1,247.03
6CD55T06	55	6.18	55.7	16.2	10.99	3.19	67.93	19.74	13.03	19.21	3.74	5.00	\$4,305.17 \$1,845.07
6CD55T13		13.19					144.94	42.11	20.04	33.23			\$5,192.79 \$2,225.49
6CD55T20		20.12					221.09	64.24	28.86	49.98			\$9,412.65 \$4,034.00
6CD75T06	75	6.10	81.7	25.9	16.09	5.12	98.1	31.21	13.70	19.80	4.53	5.75	\$5,745.80 \$2,462.49
6CD75T13		13.11					210.93	67.06	20.71	33.82			\$8,185.16 \$3,507.93
6CD100T06	100	6.57	104.4	48.6	20.57	9.58	135.23	62.98	14.06	20.63	5.12	6.97	\$5,982.21 \$2,563.80
6CD100T13		13.11					269.66	125.58	20.63	33.74			\$8,682.65 \$3,721.14
6CD100T18		18.15					373.31	173.86	27.05	45.20			\$12,147.87 \$5,206.23



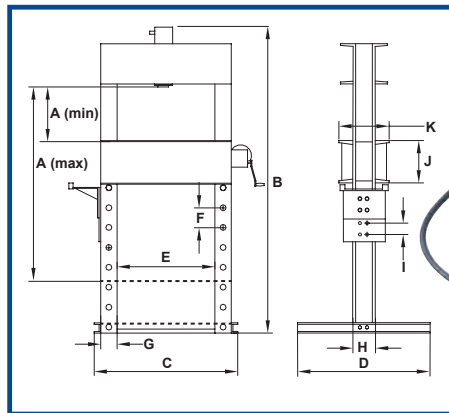
Double Acting Hand Pumps

- A 4-way control valve for operation of double acting cylinders
- Large oil capacities to power a wide range of cylinders and tools
- Two speed operation increases productivity and reduces user fatigue



DOUBLE ACTING HAND PUMP SPECIFICATIONS

Product Code	Used with Cylinder	Pump Type	Usable Oil Capacity	Pressure Rating		Piston Stroke (in)	Dimensions (in)										Price / Sale Price
				1st Stage (psi)	2nd Stage (psi)		A	B	C	D	E	F	G	H	J	K	
5HD2S100	Double Acting	Two Speed	128.0	200	10,000	0.82	19.75	6.64	23.69	18.37	2.36	1.73	20.71	4.72	3.54	22.56	\$1,700.35 \$728.73
5HD2S500			476.0	290	10,000	1.67	25.79	11.61	30.35	11.54	24.17	8.25	26.94	15.24	11.18	-	\$5,030.01 \$2,155.71



55/100 Ton Shop Press

- Heavy steel welded construction
- Multi-position bed for work height adjustment
- Ideal for the removal or installation of gears, universal joints, pulleys, wrist pins, and other press jobs
- Excellent for bending, bonding or straightening applications
- Presses include cylinders, pumps, gauge, hose and fittings



Maintenance Kits

PORTABLE FOR EASY USE IN THE PLANT OR ON THE JOB SITE

- Custom fitted, rugged, blow-molded storage case (10-ton set has wheels for easy movement)
- Designed for applications of pushing, spreading, pressing and more
- Pumps are rated from 8,000 to 10,000 PSI
- Kits include hand pump, ram, assorted attachments, extension tubes and more

4-Ton 4M04T \$548.29 ~~\$548.29~~ **\$234.99**

10-Ton 4M10T \$956.82 ~~\$956.82~~ **\$410.07**

55/100 TON SHOP PRESS SPECIFICATIONS

Stock No.	Capacity (Tons)	Pump Model	Pump Type	Stroke Length	Bed Position	Dimensions (in)												Price / Sale Price	
						A (Min.)	A (Max.)	B	C	D	E	F	G	H	I	J	K		
9A55T06	55	5AS150	Air	6	9	14	55.5	79	56	30	35.4	6	4	9	3	10	14.8	\$14,949.04 \$6,406.73	
9E55T06		5E05H1GR	Electric	6														\$18,804.50 \$8,059.07	
9H55T06		5HS25200	Manual	6														\$14,505.87 \$6,216.80	
9A55T13		5AS380	Air	13														\$16,570.62 \$7,101.70	
9E55T13		5E05H1GR	Electric	13														\$20,292.93 \$8,696.97	
9E100T10	100	5E10H2GR	Electric	10	8	11.3	51	89	63	30	35.5	8	N/A	10	N/A	12	16	\$28,412.24 \$12,176.67	

NEW POWDERED METAL BANDSAW BLADE TECHNOLOGY



THE BEST QUALITY RAW MATERIALS EQUALS BETTER SAWING

✓ LONGER LIFE* ✓ WITHSTANDS GREATER HEAT* ✓ MORE CONSISTENT BREAKDOWN*

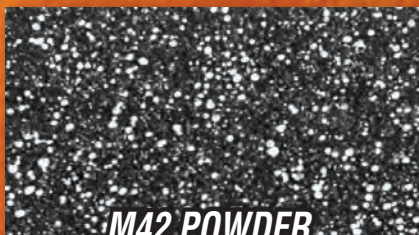
*VS. CONVENTIONAL M42 WIRE

NEW POWDERED METAL M42 HIGH SPEED STEEL TOOTH EDGE
GIVES A COMBINATION OF HIGHER HARDNESS AND HIGHER TOUGHNESS.



POWDERED METAL BANDSAW BLADE TECHNOLOGY MICRO-STRUCTURE

The carbides (bright spots) shown at 500X magnification below are more uniform in size and distribution which gives a higher and consistent overall hardness. This leads to better wear resistance in the blade.



M42 POWDER



CONVENTIONAL M42 WIRE

QUICK DELIVERY!

THE **MOST FLEXIBLE** SOLUTION FOR
CUTTING, FROM GENERAL PURPOSE
TO PRODUCTION

- New geometry with variable teeth pattern to maximize cutting performance
- Less vibrations, better wear resistance
- Production cutting of the toughest material
- Cuts: solids, profiles, castings, aluminum, stainless steel

Follow the fish!



A.C.T. EQUIPMENT SALES LTD.
www.actequipment.com

Surrey Branch

18533 97 Avenue
Surrey, BC V4N 3N9
Tel: (604) 294-6271
Fax: (604) 294-8131
1(800) 667-1504
surrey@actequipment.com

Edmonton Branch

6786-75th St. N.W.
Edmonton, AB T6E 6T9
Tel: (780) 462-1777
Fax: (780) 461-5605
1(800) 661-5979
edmonton@actequipment.com

Calgary Branch

Bay 10, 7003-30th St. S.E.
Calgary, AB T2C 1N6
Tel: (403) 279-6016
Fax: (403) 279-5390
1(800) 685-8155
calgary@actequipment.com

Saskatoon Branch

Unit 112 - 4002 Arthur Rose Ave.
Saskatoon, SK S7P 0C9
Tel: (306) 244-4810
Fax: (306) 244-4811
1(866) 234-0120
saskatoon@actequipment.com

Winnipeg Branch

Unit 4 - 2065 Logan Ave.
Winnipeg, MB R2R 0J1
Tel: (204) 783-3210
Fax: (204) 783-3224
1(877) 783-3201
winnipeg@actequipment.com

