

FLASHSOLID

ECO SOLID LINE

SAVE
ADDITIONAL
ON THESE IN
STOCK 4 FLUTE
END MILLS

Variable pitch with 38° continuous helix to mitigate vibration, improving performance. Performs well under heavy cutting conditions, up to full slotting applications.

3 Flute, 4 flute, 5 flute, 6 flute and 7 flute available in a wide range of radius options, many relieved neck and extended flute options for deep shoulder and pocketing applications. 568 Standard variations in 4 flute alone!

Ball Nose available in 3,4, 5 & 6 flute. 4 & 5 Flute tools available in cylindrical and weldon shank.

V910 TiAlCN PVD (IC 608) nanolayered structure provides excellent wear resistance and is ideal for HEM (Trochoidal) operations in hardened steel (up to 60 HRC). Excellent for most materials.



Longer Tool Life



Higher Speed & Feed



Superior Surface Finish



Stronger Cutting Edge

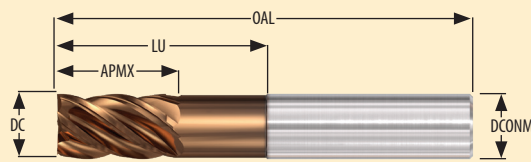


Easy Chip Evacuation



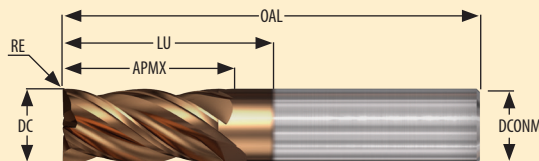
Reduced Cycle Time

STANDARD SHARP



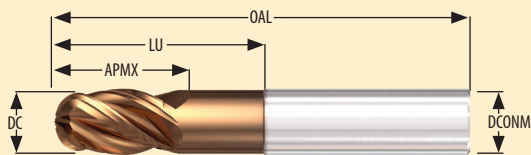
Model No.	Designation	DC	APMX	LU	RE	DCONMS	OAL	NOF	Shank	A.C.T. No.	Special Price \$
3398259	ECI-4 250-750COVF2.5 IC608	.250	.7500	.7500	.0000	.250	2.500	4	C	339246	23.34
3401266	ECI-4 375-750/1.25W0VF3 IC608	.375	.7500	1.2500	.0000	.375	3.000	4	W	341824	40.31
3401295	ECI-4 500-1.0W0VF3 IC608	.500	1.0000	1.0000	.0000	.500	3.000	4	W	336380	50.32
3401315	ECI-4 625-1.25W0VF3.5 IC608	.625	1.2500	1.2500	.0000	.625	3.500	4	W	341825	85.35

CORNER RADIUS



Model No.	Designation	DC	APMX	LU	RE	DCONMS	OAL	NOF	Shank	A.C.T. No.	Special Price \$
3398007	ECI-4 250-750C015VF2.5 IC608	.250	.7500	.7500	.0150	.250	2.500	4	C	338142	27.43
3401102	ECI-4 375-750/1.2W03VF3 IC608	.375	.7500	1.2500	.0300	.375	3.000	4	W	348387	46.88
3398029	ECI-4 500-875/2.12C015VF4 IC608	.500	.8750	2.1250	.0150	.500	4.000	4	C	337890	59.28
3398031	ECI-4 500-1.0C015VF3 IC608	.500	1.0000	1.0000	.0150	.500	3.000	4	C	335998	59.28
3401116	ECI-4 500-1.0W03VF3 IC608	.500	1.0000	1.0000	.0300	.500	3.000	4	W	337701	59.28

BALL NOSE



Model No.	Designation	DC	APMX	LU	DCONMS	OAL	NOF	Shank	A.C.T. No.	Special Price \$
3398258	EBI-4 250-750CVF2.5 IC608	.250	.7500	.7500	.250	2.500	4	C	342406	27.43
3398306	EBI-4 500-1.0CVF3 IC608	.500	1.0000	1.0000	.500	3.000	4	C	343708	59.28

ADDITIONAL DISCOUNTS ON ISCAR'S ENTIRE SOLID CARBIDE END MILL LINES

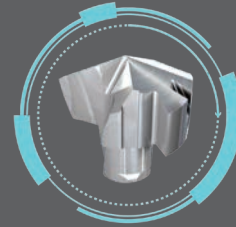
FLASHSOLID **CHATTERFREE** **SOLIDMILL**

ISCAR's SUMOCHAM Drill family is the next evolution of the very successful CHAMDRILL and CHAMDRILLJET families. The new family has similar features, with improved head and pocket design, no setup time, fast metal removal and economical indexing. SUMOCHAM drills with indexable heads, one flat shank and internal coolant holes. Feature 4 standard drilling head types for drilling on 4 different material groups.

The SUMOCHAM line provides a wide range of Drill Bodies, starting from 1.5 L/D drilling ratio up to 12XD.



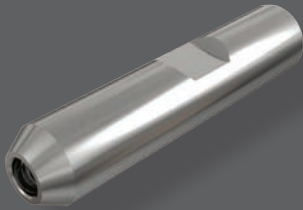
Purchase 2 SUMOCHAM Inserts (0.236" – 1.26") And receive a **30%** discount on the corresponding Drill Body up to 12XD.



ICP / ICK / ICM / HCP / FCP / ICG / QCP / ICN

MULTI-MASTER

STANDARD STEEL SHANK



Coolant and Non-Coolant available

ER COLLET SHANK HOLDER



Coolant and Non-Coolant available

Purchase 8 Multi-Master Heads and receive one of the following three Bonus Offers

#1 Corresponding Steel Shank Holder **FREE**

#2 Corresponding Steel ER Collet Shank Holder **FREE**

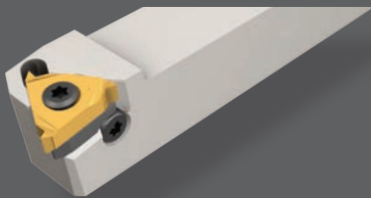
#3 Corresponding Carbide Shank Holder Save **35%**



Quantity can be achieved by any assortment of heads with same shank size as the holder selected. Inserts sold in standard package (2).

ISCARTHREAD

EXTERNAL THREADING



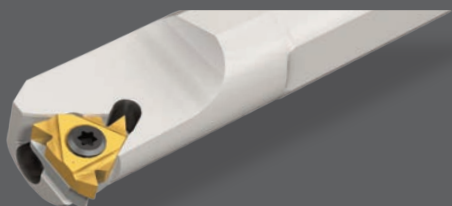
Purchase 30 External Laydown Threading Inserts and receive the corresponding Non-Coolant through External Toolholder for **FREE**

Purchase 50 Internal Laydown Threading Inserts and receive the corresponding Non-Coolant through Threading Bar for **FREE**

Purchase 60 Internal Laydown Threading Inserts and receive the corresponding Coolant Fed Threading Bar for **FREE**

ISCARTHREAD

INTERNAL THREADING



Quantities can be achieved by any assortment of the same insert size (IC). Inserts sold in standard package (5).